



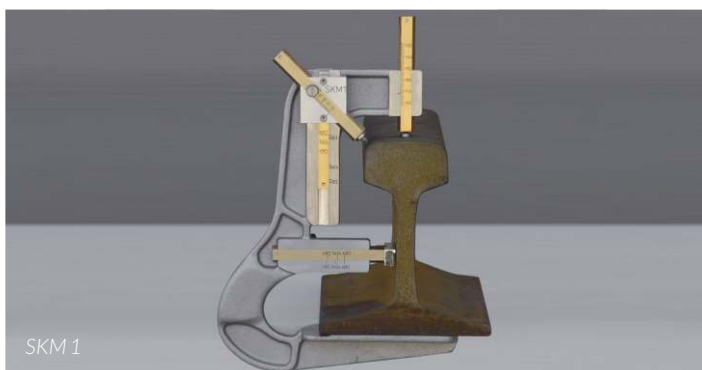
Vogel & Plötscher

SKM 1 | SKM 2

Rail head wear measuring device



- Easy to use
- For different rail profiles
- Rail height and wear of the running edge



SKM1 | SKM2

The SKM is the world-wide accepted solution for the determination of the rail height and of the wear of the running edge of exposed Vignoles rails. By default, the measuring device is provided for the 60E2, 54E4 and 49E5 rail profiles. More profiles and their combinations are optionally available on request.

Easy operation – instant result

The required rail profile is adjusted using two slides and the measuring device is fixed at the rail foot supported with the magnets of the contact plate. Afterwards, the measurement styli are moved down to the rail head and the measuring results can be directly read off the stylus precision scale.

One solution – two versions

Both the SKM 1 and the SKM 2 have the same basic design and identical handling. The two versions determine the rail height and the wear of the running edge at an angle of 45° relative to the central axis of the rail. Furthermore, the SKM 2 is featured with two more lateral measuring styli for the determination of the wear of the running edge – in 22,5° and 67,5° relative to the central axis of the rail.

Both measuring devices consist of a robust cast aluminum body. They are high-quality processed and equipped with measurement scales from CNC precision manufacturing. The SKM is shipped in a padded and solid transport case. The SKM 1 and SKM 2 are approved by DB AG.

Technical data

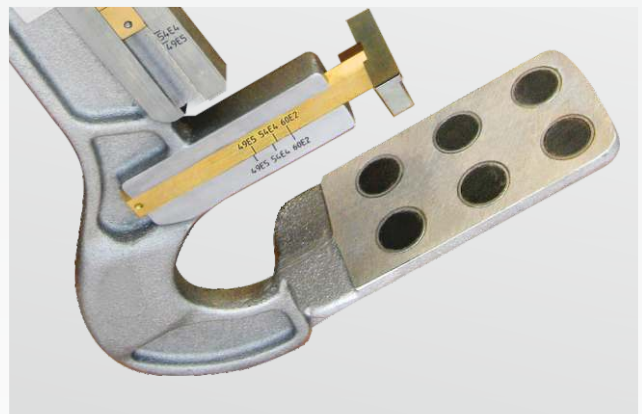
Measurement resolution:	1,0 mm
Standard rail profiles:	60E2, 54E4, 49E5
Dimensions Weight	
> SKM:	~ 220 x 60 x 280 mm 1,4 kg
> Case:	~ 310 x 95 x 360 mm 0,9 kg



SKM 2: Measuring the wear of the running edge at three reference points



SKM 2 in its transport case



Rail foot contact plate with magnetic supports

Key features

- + Easy to use
- + Adjustable for different rail profiles
- + Robust cast body with magnetic supports
- + Suitable transport case

