



Vogel & Plötscher

RCAD

Digital switch gauge and cant measuring device



- > Accurate measurements
- > Easy to use
- > Bluetooth data transfer (option)



RCAD

The RCAD combines easy digital measurements with the highest levels of accuracy and certainty.

The best just got better

Meanwhile our tried-and-tested measuring device has been successfully upgraded. It now features a higher-resolution display, improved electronics, and better Bluetooth functionality – while it is just as easy to use as ever. The manual fine adjustment system with a built-in friction clutch grants ultra-precise measurements, while the backlit LCD display ensures great legibility, even in the dark (requires two standard AA batteries).

Proven functionality

The RCAD can be adapted as required for a range of measurement tasks. Thus, it is available with optional features, e.g. a test adapter for switch tongues or a measuring unit for checking the frog nose inclination. Convenient: the separable version (RCAD-T) is both ultra-compact and easy to transport.

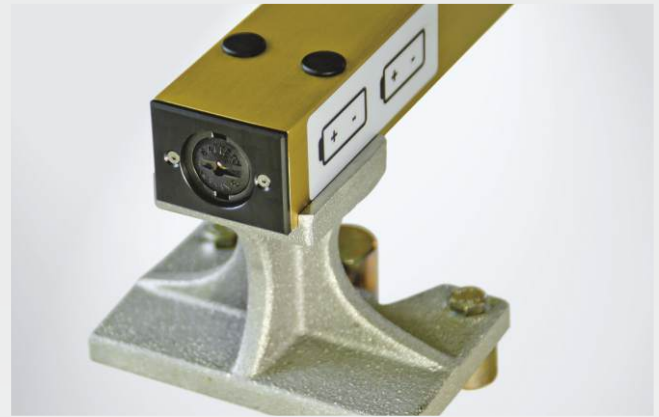
Do more with Bluetooth

The compact design of our latest generation Bluetooth device (RCAD-BT5) stands out thanks to its improved ergonomics and wider range of features. For instance, it allows you to store all your measurements in the system's memory or transmit them directly to a connected smart device with a double button press. It supports smart devices running Apple iOS, Google Android, and Microsoft Windows. The optional **MessApp** software enables a smart and efficient evaluation of the transmitted measurement data.

➤ Technical data*

Measurement resolution:	0.004"
Track gauge:	53.82" – 58.07"
Flangeway clearance:	0.79" – 5.03"
Check rail gauge:	53.03" – 57.28"
Back-to-back distance:	52.24" – 56.50"
Cant:	± 8.85"
Dimensions Weight	
> RCAD:	~ 63.70" x 3.94" x 6.14" 2.5 kg

* All figures based on a nominal gauge of 56.50".
Details for other gauges available on request.



Broad contact and battery holder



Mounting with test adapter for switch tongues (option)



Narrow contact with groove depth measuring unit (option)

Key features

- + Precise digital measurements
- + Central, backlit measurement display
- + Bluetooth data transfer (option)
- + MessApp software (option)
- + Insulated design
- + Official German DB approval

