



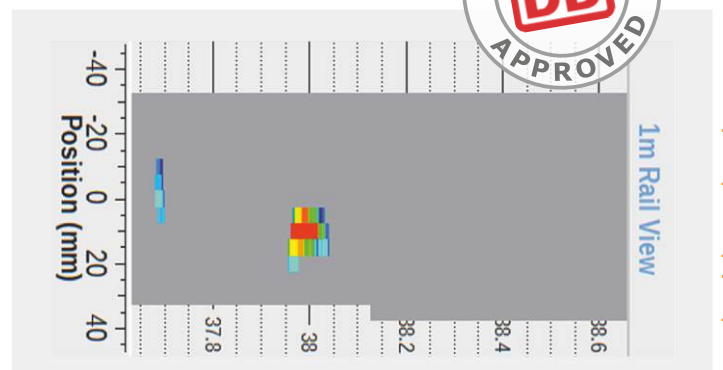
Vogel & Plötscher

RSCM

Rail Surface Crack Measurement



- Analysis of rail defects up to 7 mm depth
- Continuous evaluation of the rail surface
- Complies with EN 61000-6-4:2017 and DB Ril 821.2007V03-36



RSCM

RSCM is the approved measurement system for capturing defects on the rail surface. Defects like rolling contact fatigue [RCF] (e. g. Head Checks and Squats), metal loss or pitting are captured and analyzed down to depths of 7 mm.

Innovative capture

Measuring system and software convince with their user-friendly handling. The rail surface is recorded using a patented measuring principle: a magnetic flux is created in the rail and the rail head is captured by 19 highly sensitive sensors arranged in 5 mm distances.

The measuring process is supported by multifunctional setting options in the software which are displayed during the data evaluation. It is possible to add further information or set event markers while evaluating the rail surface.

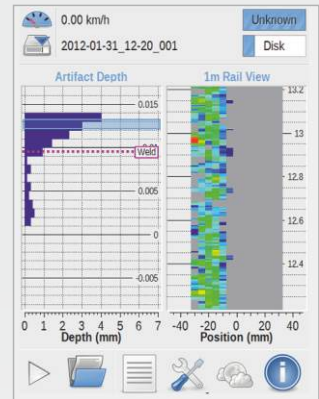
On-site evaluation

During the measurement all important information can be analyzed in real time. A 25 m section of track is displayed on two screens, highlighting the largest depth for each meter section in this area. This defect depth shows the amount of material that must be removed from the rail profile to eliminate the defect. With the captured raw data of the rail surface, a detailed damage map is generated showing the exact location of the various rail defects on the rail head of the selected 1 m section. Based on the damage map and the largest defect depth, rail maintenance measures can be taken and initiated directly.

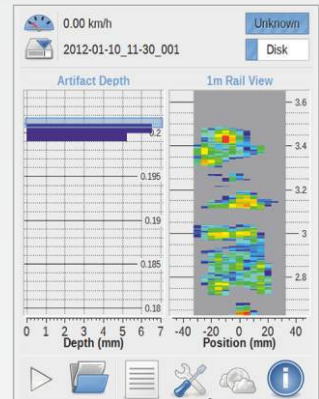
RSCM can be set up and operated by one person. The RSCM comes complete with a tough storage case containing all accessories for the use and initialization of the measurement system.

Technical data

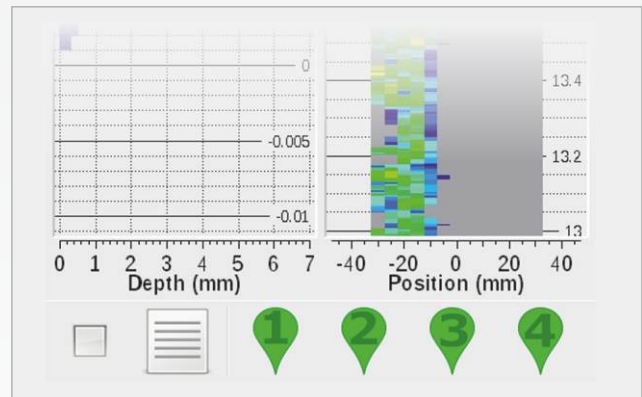
Measurement resolution:	0,1 mm
Damage depth:	0,1 bis 7,0 mm
Life of battery:	4 h minimum
Memory capacity:	20 km track
Measurement speed:	2 – 5 km/h
Dimensions Weight:	
> RSCM:	~ 700 x 165 x 820 mm 20 kg
> Case:	~ 800 x 580 x 420 mm 17 kg



RCF on the rail surface and its mapping in the software



Pitting on the rail surface and its mapping in the software



Event markers for the measuring process

Key features

- + Digital capture of defects of the rail surface
- + Evaluations acc. to EN 61000-6-4:2017 and DB guideline 821.2007V03-36
- + Max. defect depth = 7 mm
- + IP 65 protection class
- + Second screen for improved ergonomics
- + Weather-independent
- + German DB approval

