



Vogel & Plötscher

PART OF **ROBEL**
GROUP

PML

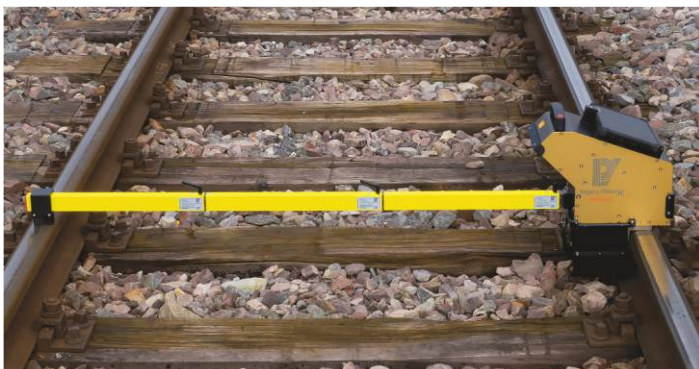
Laser-based transverse profile measuring system



➤ Metal removal measurement

➤ Complies with EN 13231-2:2020

➤ Grooved rails measurement (option)



PML

The new generation of rail transverse profile measurement. PML captures the rail transverse profile and the metal removal according to the applicable regulations. The low weight ensures an ergonomic use.

Efficient measurement

The measurement with PML requires little time. The actual-target-comparison to a reference profile is shown live as preview. After the measurement, the evaluation only needs a few seconds. The measuring result can be exported in PDF format, which enables the securing and transferring of measuring results to different devices.

You can add a second measurement to an existing one – e.g. for comparison of measurements before and after rail treatment. In this case, the metal removal is automatically shown in the evaluation. The integration of various reference profiles enables the use of PML on many different rail profiles.

PML is delivered with a 3-part support arm for measurements on tracks with different track gauges. Both the support arm and the other accessories are stored in the practical transport case with smart rollers.

There are two versions with the same basic design and identical handling. While PML V can be used on Vignole's rails, PML VG can additionally capture the rail profile of grooved rails.

Integrated measuring technology

Besides the hand guided PML, the measuring technology can also be integrated in rail treatment machines. As the data capture and evaluation is the same for both variants, the handling for the user is simple.

Technical data

Measurement resolution:	0,01 mm
Samplingrate:	0,14 mm
Measurement uncertainty:	< 0,1 mm
Length support arm:	1350 mm
Dimensions weight:	
> PML:	
PML V	~ 350 x 220 x 330 mm 6,2 kg
PML VG	~ 350 x 220 x 330 mm 6,8 kg
> Case:	~ 660 x 490 x 335 mm 10 kg



Integrated laser-based transverse profile measuring system



PMLcatcher Software

Key features

- + Laser-based capture of the rail transverse profile
- + PML complies with EN 13231-2:2020
- + Powerful tablet-computer
- + Can be used for any gauge
- + Metal removal measurement

For more information
see vogelundploetscher.de

Vogel & Plötscher GmbH & Co. KG
Geldermannstr. 4
D-79206 Breisach
Tel: +49 (0)7667 946100
info@voploe.de


Vogel & Plötscher
PART OF **ROBEL** GROUP