



Vogel & Plötscher

PART OF **ROBEL**
GROUP

MessReg CTS II

Continuous track measuring system



Efficient track measurement



Automatic-continuous data capture



Graphical measurement display



vogelundploetscher.de

MessReg CTS II

This measuring trolley is ideal for measuring sections of tracks accurately and efficiently. It shows and stores relevant track parameters (distance, track gauge, cant and twist) continuously and in real time. The graphical measurement display makes it easy to spot tolerance exceedings and how they develop. The comments function allows the user to record the exact positions of any defects or other concerns on the track, and to describe them in detail.

Powerful hardware

MessReg CTS II is equipped with a powerful outdoor tablet with the latest Windows operating system and integrated camera. The low-glare 10.1" display with touchscreen functionality guarantees an outstanding legibility and ease of use.

Functional software

The associated CTSline measuring program is menu-driven and intuitive to use. The measured values are displayed numerically and graphically. After the measurement is complete, the recorded measurement data and track information can be exported directly to an Excel file for further processing by pressing a button. Recommended: the optional evaluation program **CDMviewer** offers convenient processing of the measured values with helpful analysis functions - including creation of the associated measurement report (PDF).

Practical, ergonomic design

The robust storage case with integrated rollers ensures safe and ergonomic transportation. Thanks to its low weight and unique folding mechanism, the MessReg CTS II can be set up and operated by a single person. If required, the measuring system can be functionally extended, e.g. with a suitable mounting for carrying a switch gauge.

Technical data*

| | |
|-------------------------|---------------------------|
| Measurement resolution: | 0,1 mm |
| Sampling rate: | 100 mm |
| Track gauge: | 1415 – 1490 mm |
| Cant: | ± 225 mm |
| Twist: | ± 225 mm |
| Dimensions Weight | |
| > MessReg CTS II: | ~ 1550x505x618 mm 19 kg |
| > Transport Case: | ~ 1560x640x395 mm 11 kg |

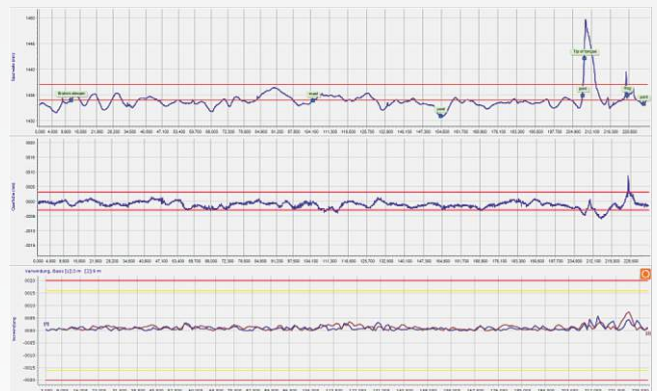
* All figures based on a nominal gauge of 1435 mm.
Details for other gauges available on request.



MessReg CTS II with mounting for manual switch gauge



MessReg CTS II in its transport case



CDMviewer software

Key features

- + Continuous, digital track measurements
- + Automatic data capture and storing
- + Graphical measurement display in real time
- + Powerful, user-friendly software
- + Robust transport case with built-in rollers

For more information
see vogelundploetscher.de

Vogel & Plötscher GmbH & Co. KG
Geldermannstr. 4
D-79206 Breisach
Tel: +49 (0)7667 946100
info@voploe.de



Vogel & Plötscher

PART OF **ROBEL** GROUP